

Official Special District Ballot

Klamath County, OR

May 18, 2021

Instructions to Voter

Use a **BLUE** or **BLACK** pen to fill in the oval to the left of your choice.

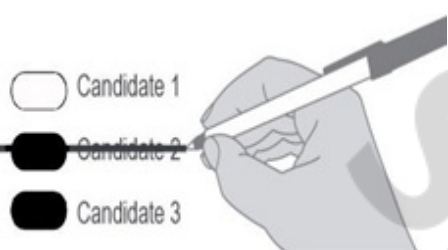
To write in a name that is not listed on the ballot, fill in the oval to the left of the write-in line.

Do not use White Out on ballot.

It is not required to vote all contests, your ballot will still be valid.

Questions? (541) 883-5134.

How to Correct a Mistake



Southern Oregon Education Service District

Director, Zone 4
2 - Year Unexpired Term
Vote for One

Jessie Hecoccta

Write-In

Klamath Community College

Director, Zone 5
Vote for One

Cameron S DeSpain

Linda Dill

Reginald R Davis

Valerie C Lenardson

Write-In

Director, Zone 7, At Large
Vote for One

Richard Harrington

Kaitlin Hakanson

Steven Morton

Jason R Flowers

Write-In

UNOFFICIAL

THIS IS NOT A REAL BALLOT DO NOT USE TO VOTE.

Warning
Any person who, by use of force or other means, unduly influences an elector to vote in any particular manner or to refrain from voting is subject to a fine. (ORS 254.470)

Klamath Falls City School District

Director, Zone 3
Vote for One

Vanessa R Bennett

Devery Saluskin

Timothy C Pimentel

Write-In

Director, Zone 6
Vote for One

Marissa Davidson

Mychal B Amos

Patrick Fenner

Write-In

Director, Zone 7
Vote for One

Dawn R English

Ashley Wendt-Lusich

Carlos J Soriano

Deb Rodgers

Tonie Kellom

Write-In

Klamath County Fire District #4

Director, Position 1
Vote for One

Daniel Scalas

Write-In

Director, Position 2
Vote for One

Phyllis C Shidler

Write-In

Basin Transit Service District

Director
Vote for Four

Sandra Fox

Craig A Fleck

Write-In

Write-In

Write-In

Write-In

Klamath 9-1-1 Emergency Communications

Director, Zone 2
Vote for One

Dee Edson

Robert (Bob) Moore

Ken Paul

Write-In

Klamath County Measure

Referred to the People by the County
Governing Body

Measure: 18-120
Amendment of Klamath County
Transient Room Tax

Question: Shall Klamath County increase Transient Room Tax to 11 percent and apply proceeds to tourism promotion and county services?

Summary: Passage of this measure will increase the transient room tax, also known as hotel-motel tax, from 8.0% to 11.0%. Occupants of motels, hotels, RV parks, certain campgrounds, and vacation and home-stay rentals of durations less than thirty days throughout Klamath County will pay this tax. The current revenue allocations and state-mandated administrative fees will remain unchanged. Additional revenue generated from this measure will be distributed as follows: 70% of the revenue to tourism related facilities and promotion with the remaining 30% of the revenue to county services.

Yes

No

Review Both Sides of Ballot

Ballot Drop Sites
All locations are open until 8pm
Election Day

Klamath County Clerk's Office
8:00am-5:00pm, Monday-Friday
305 Main Street
Klamath Falls

Klamath County Gov't Center
24 hour drive-up
(parking lot behind building)
305 Main Street
Klamath Falls

Klamath Basin Senior Center
24 hour drive-up
2045 Arthur Street
Klamath Falls

Klamath Community College
24 hour drive-up
7390 S 6th St, New Founders Hall
Klamath Falls

Walker Range FPA
24 hour drive-up
135393 U.S. HWY 97
Crescent

Sample

UNOFFICIAL
THIS IS NOT A REAL BALLOT. DO NOT USE TO VOTE.

Review Both Sides of Ballot