



District Attorney

Annual General Fund Budget – \$1,201,668



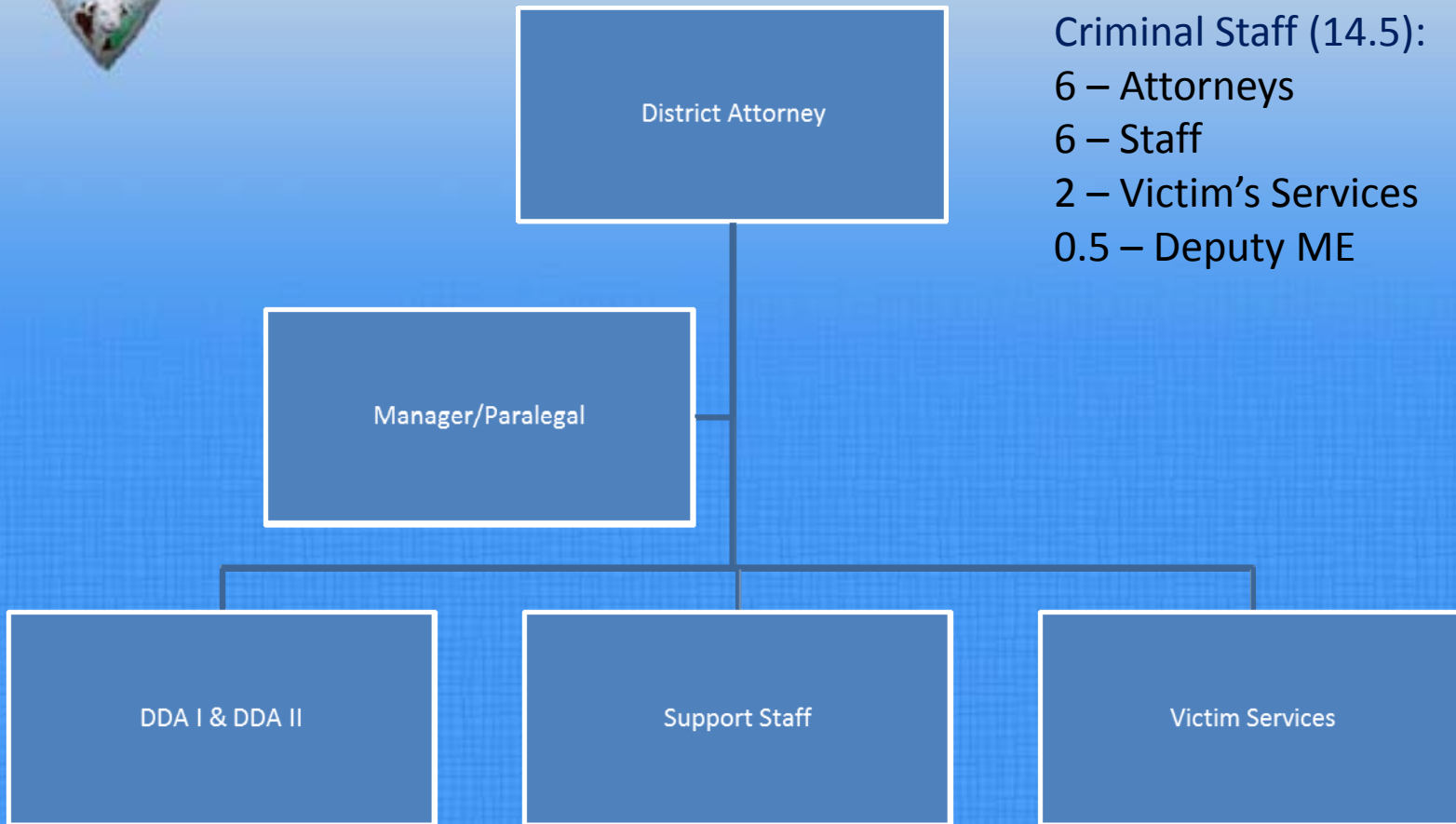
■ Personnel - 80%

■ Materials - 6.5%

■ Administration - 11%



Current Staffing



Criminal Staff (14.5):
6 – Attorneys
6 – Staff
2 – Victim’s Services
0.5 – Deputy ME



Prosecutor Caseload

One Defendant = One Prosecutor

- **Drugs/Specialty Courts (1 DDA)**
 - **Drug Court (Adult & Juvenile)**
 - **Veteran's Court**
 - **Family Court**
- **Rock & Roll - Person Felony Crimes (2 DDAs)**
- **Property Crimes (1 DDA)**
- **General Misdemeanor/Domestic Violence (2 DDA)**



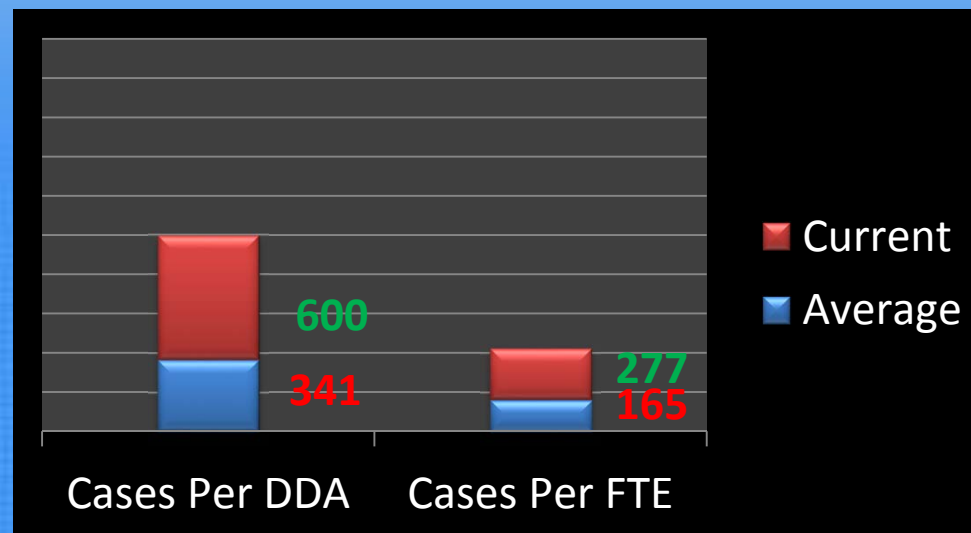
Criminal Staff





2014 Cases Referred – 3,599

Criminal Cases Referred Annually



Today DDAs do **175%** of the work done elsewhere.

Today the staff does **166%** of the work done in comparable counties.



2014 Cases Referred

Criminal Cases Referred Annually
3,599

600 Per Deputy District Attorney



Offense Filed

	2014	2013	2012	2011	2010
Extradition	48	39	63	37	31
Felony	1071	1200	1045	1041	830
Misdemeanor	1619	1578	1886	2211	2410
TOTAL	2810	2817	2994	3289	3271

78% of the Cases Referred to the DAs Office were filed last year

On average each DDA filed **468** cases last year.



Offenses Resolved

	2014	2013	2012	2011	2010
Extradition	43	48	52	36	30
Felony	1133	1129	888	828	688
Misdemeanor	1637	1752	1863	2238	1954
TOTAL	2813	2929	2803	3102	2672

On average each DDA resolved **468** cases last year.



Offenses Pending

	2014	2013	2012	2011	2010
Extradition	15	10	19	8	7
Felony	1824	1885	1809	1648	1434
Misdemeanor	2667	2686	2864	2841	2866
TOTAL	4506	4581	4692	4497	4307

751 Cases were pending per Deputy District Attorney.



Jury Trials

	2014	2013	2012	2011	2010
Felony	35	20	11	10	12
Misdemeanor	27	24	16	10	4
TOTAL	62	44	27	20	16

Jury Trials have risen by **229%** in two years.



Court Trials

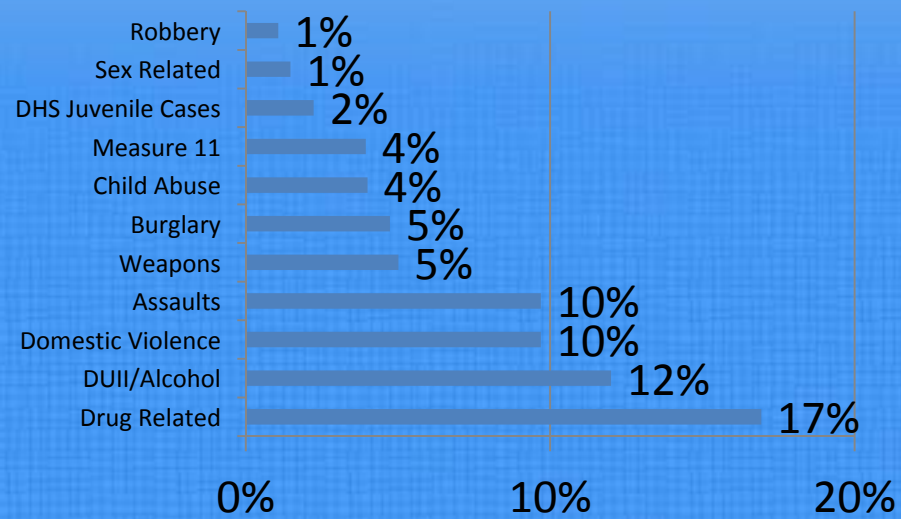
	2014	2013	2012	2011	2010
Felony	16	11	5	6	3
Misdemeanor	20	15	19	12	4
TOTAL	36	26	24	18	7

Bench trials have risen by 150% in two years



Case Types

2014 Major Case Categories



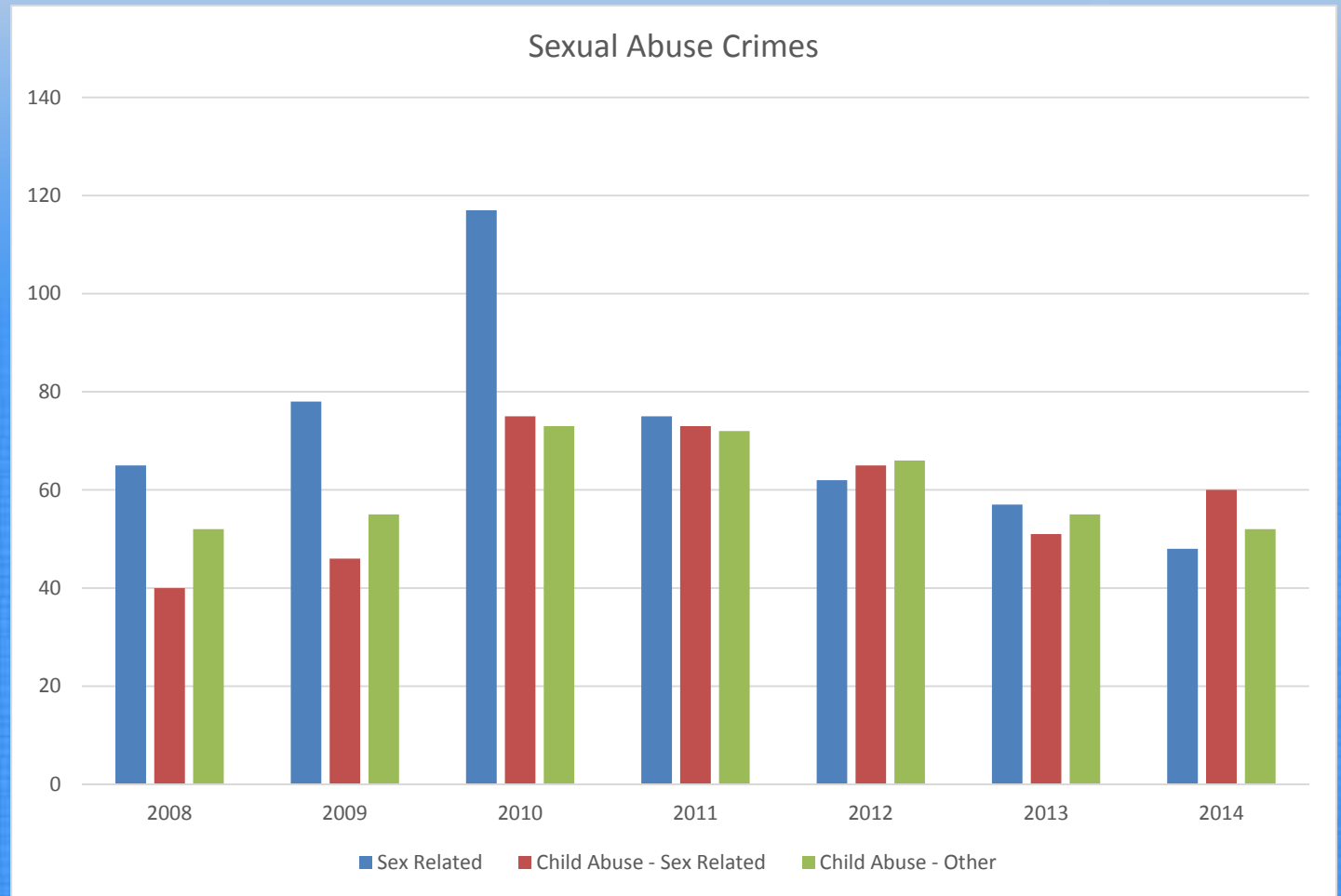


Klamath Property Crimes



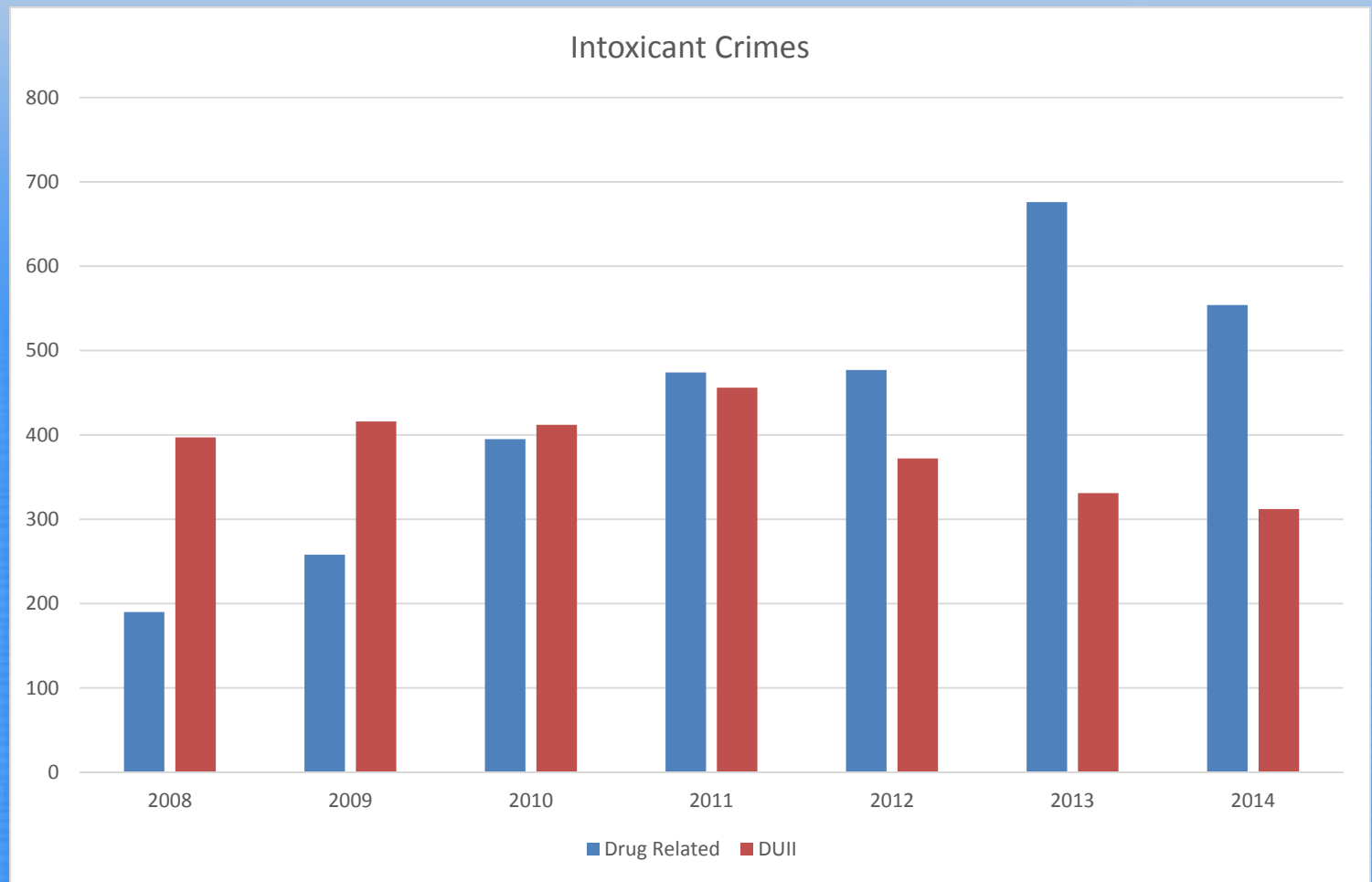


Klamath Sexual Abuse Crimes



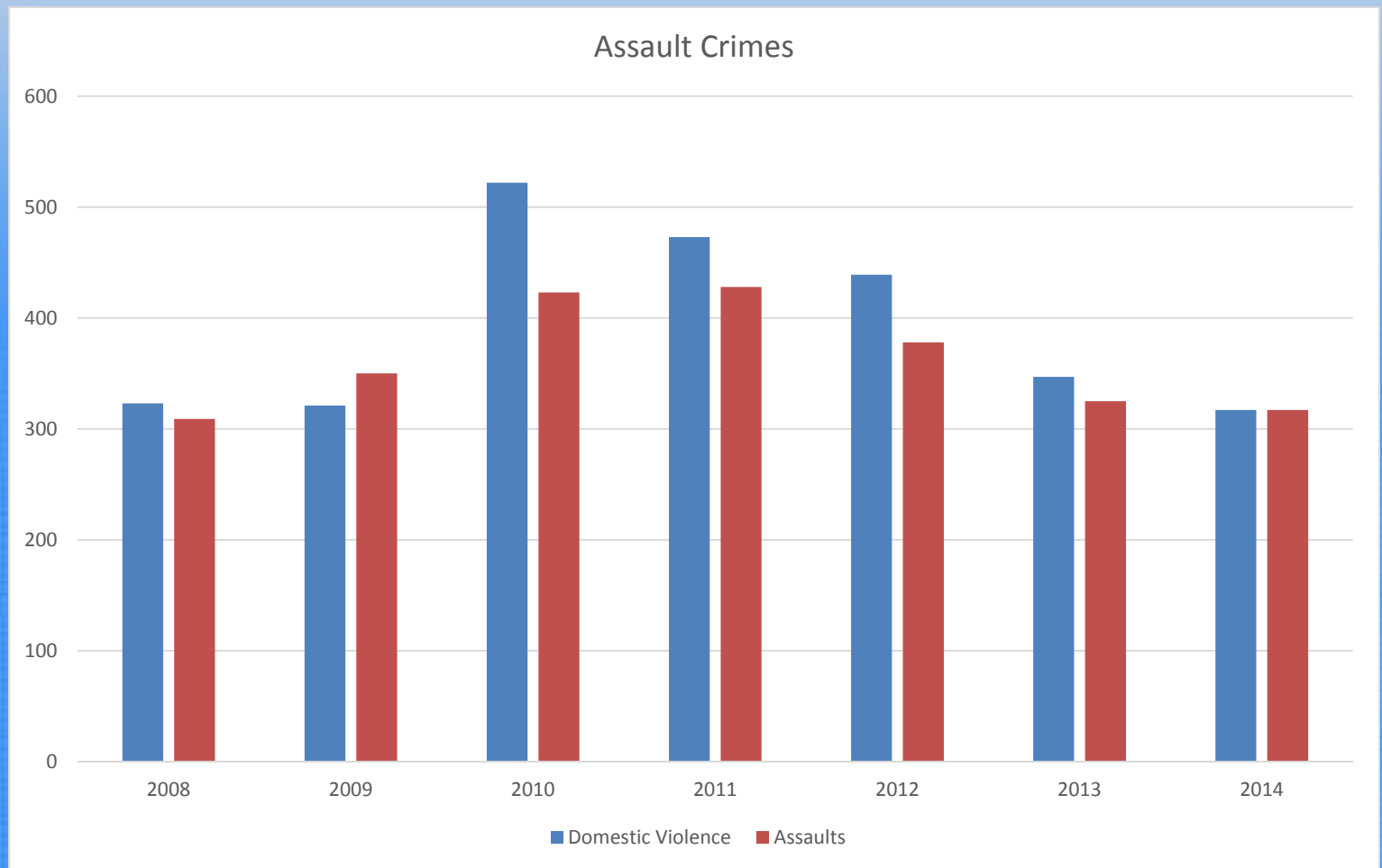


Klamath DUI & Drug Crimes



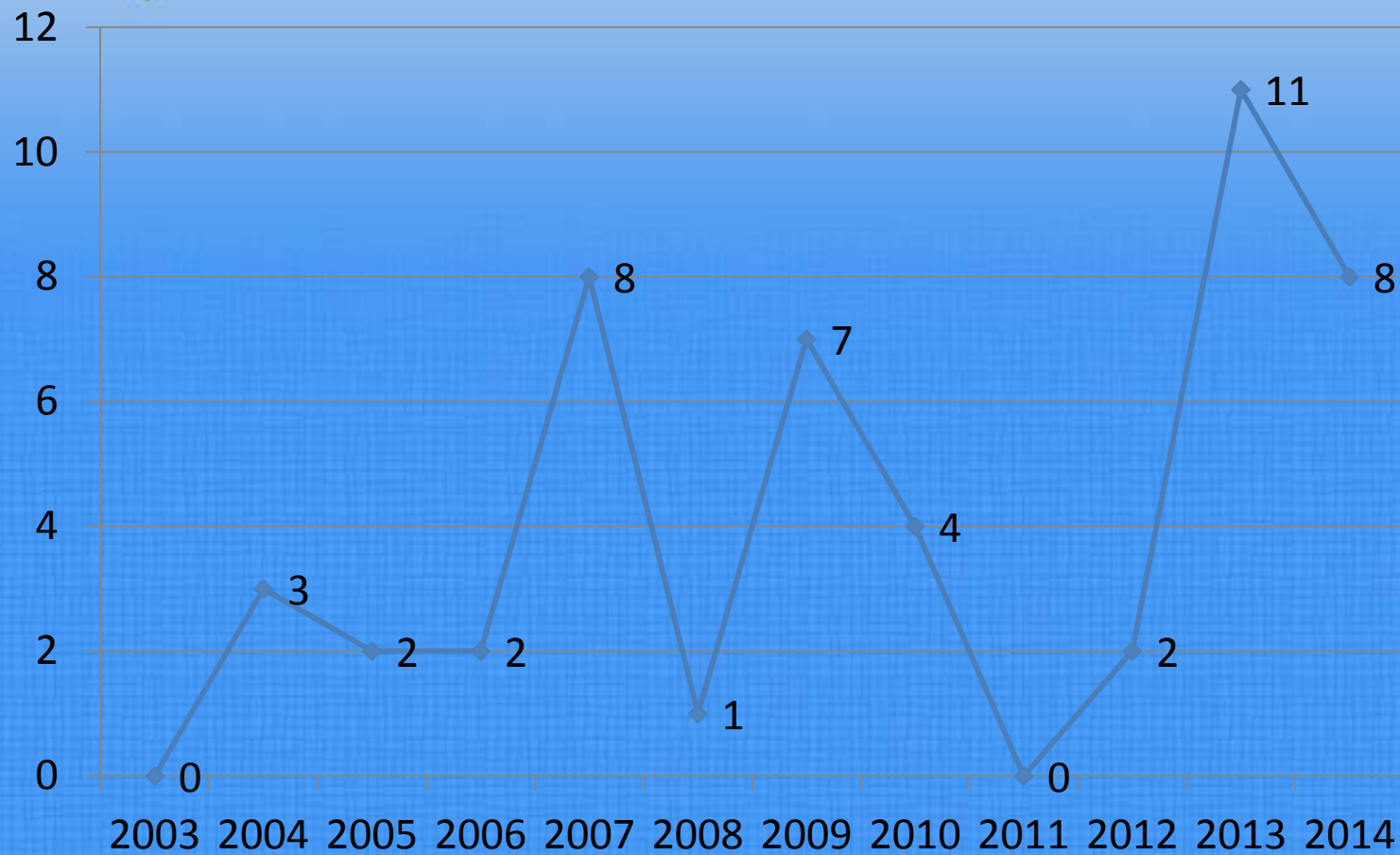


Klamath Assault Crimes





Klamath County - Homicides





Klamath County Crime 2012

- **Person Crimes – 4th in the State**
 - **116.7 vs. 94.5 per 10,000**
- **Property Crimes – 28th in the State**
 - **284.8 vs. 476.1 per 10,000**
- **Behavioral Crimes -25th in the State**
 - **339.8 vs 398.1 per 10,000**



Overview

Super Tuesday – Resolved More Cases than Filed
Court Docketing System Continues to be a Challenge
Request for Mandatory Settlement Conferences

Trials Have Increased
Jury Trials have risen by 229%
Bench Trials have risen by 150%

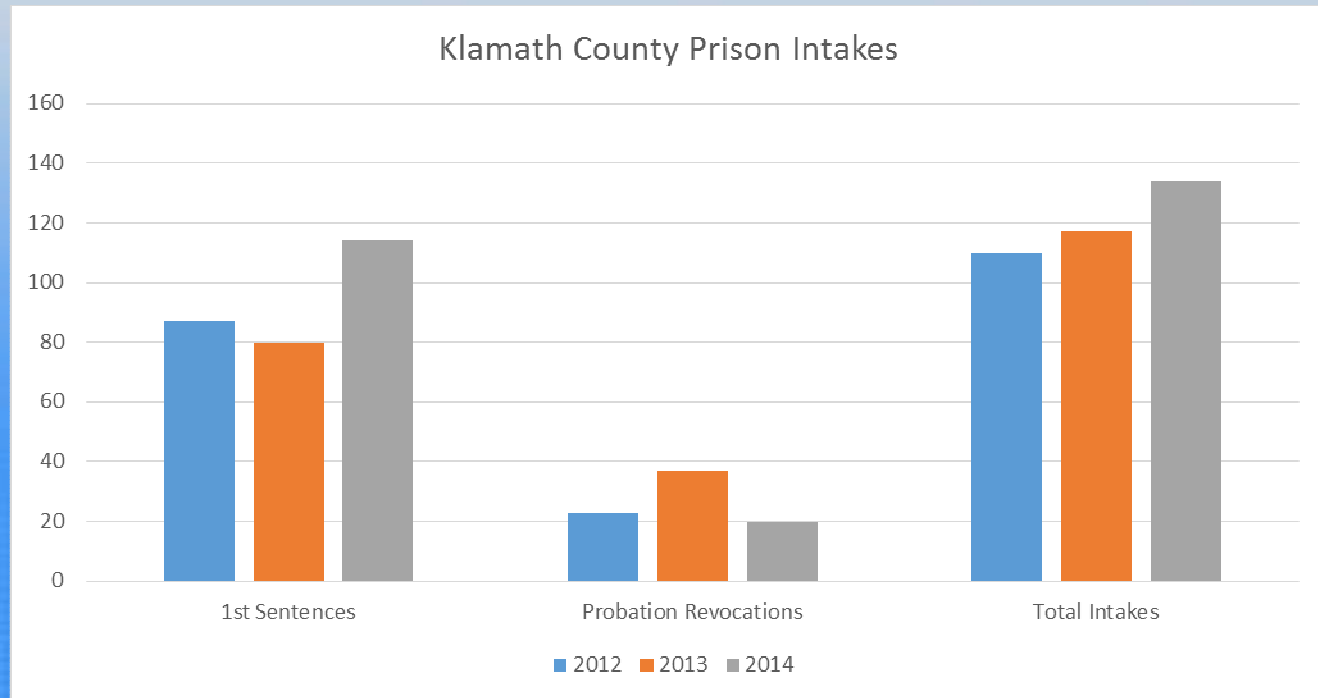
Workload is High per DDA/Staff

Victims Services Concerns

Staff Retention Concerns



STATE PRISON USAGE



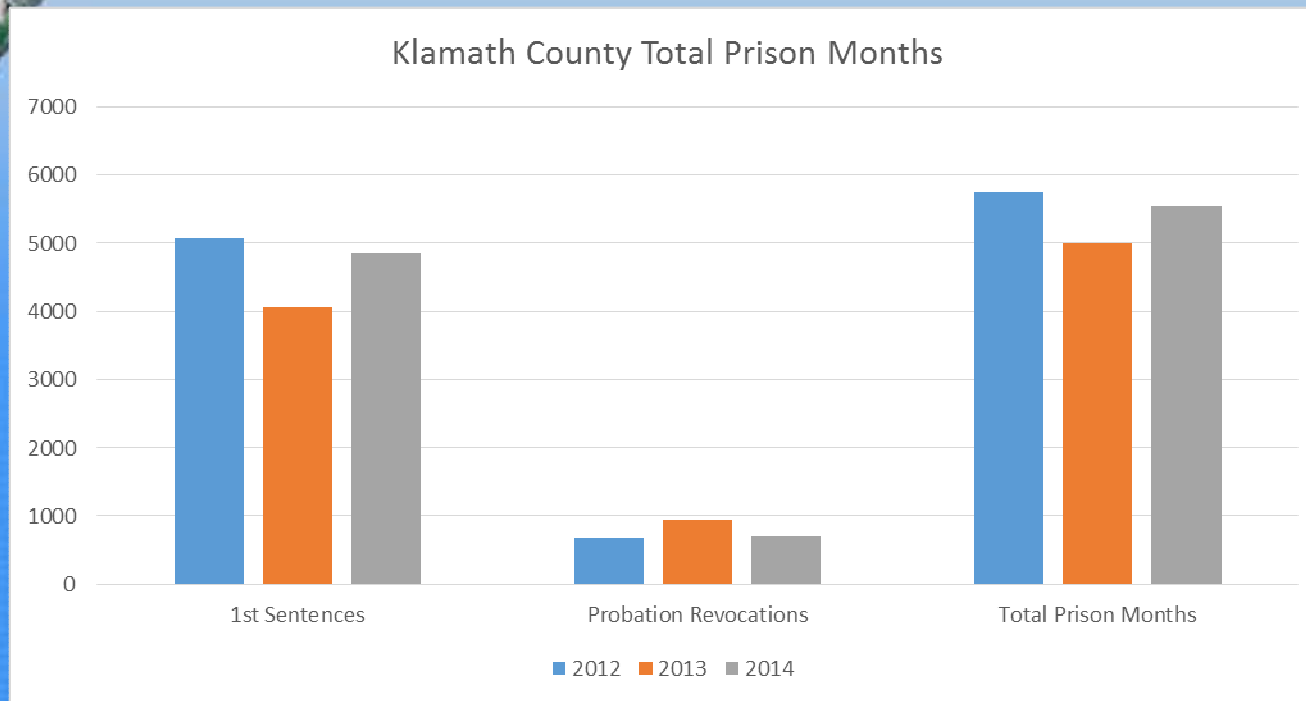
1st Sentences Up: 87 to 114

Total Intake Up: 110 to 134

Rate of Intake per 10,000: 20 vs 12.2 Statewide Average



Prison Usage Down



1s Sentences Down: 5078 to 4837
Total Prison Months Down: 5752 to 5532